

79D05

Rev.C Mar.-2026

描述 / Descriptions

TO-252 塑封封装电压调整器。

Voltage Regulator in a TO-252 Plastic Package.

特征 / Features

三端稳压调整器，输出电流高达 1.5A,内设过热保护和短路限制，无卤产品。

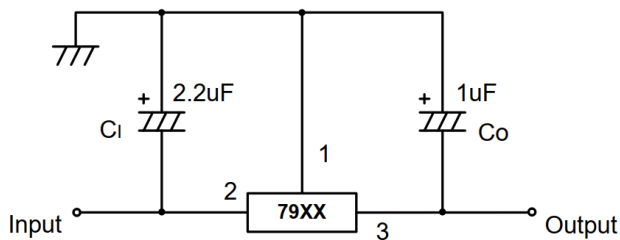
3-Terminal regulators ,output current up to 1.5A, internal thermal overload protection and short-circuit limiting, HF Product.

用途 / Applications

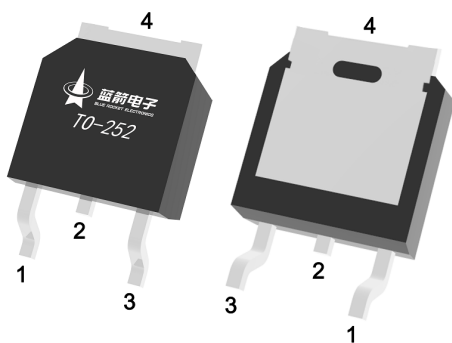
电压调整器。

Voltage Regulator.

内部等效电路/应用电路 / Equivalent Circuit or Application Circuit



引脚排列 / Pinning



PIN 1 : GND

PIN 2 : IN

PIN 3 : OUT

印章代码 / Marking

见印章说明。

See Marking Instructions.

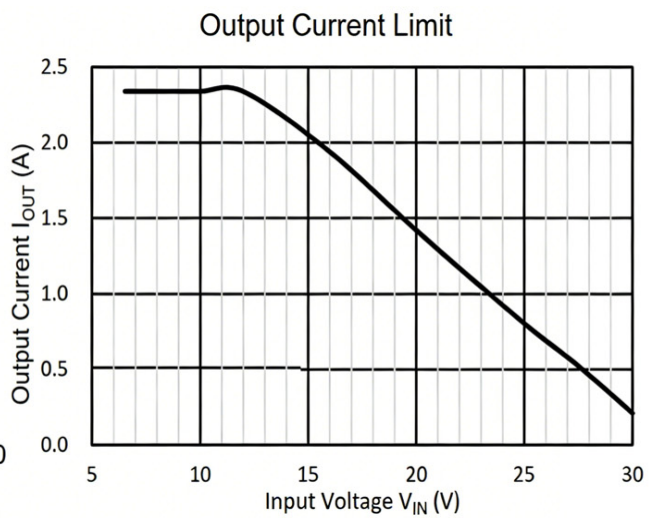
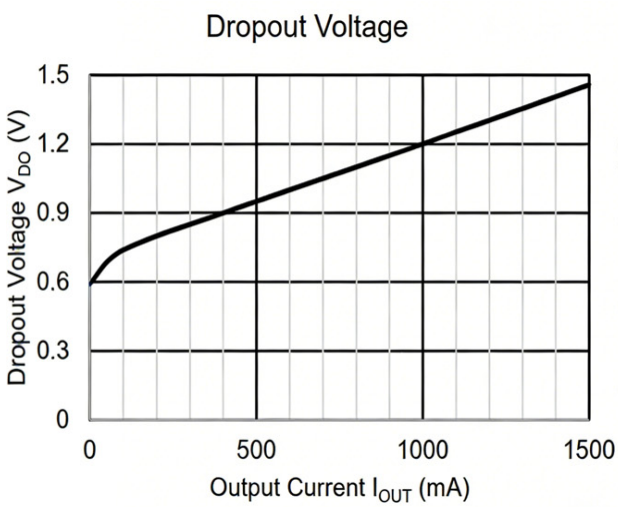
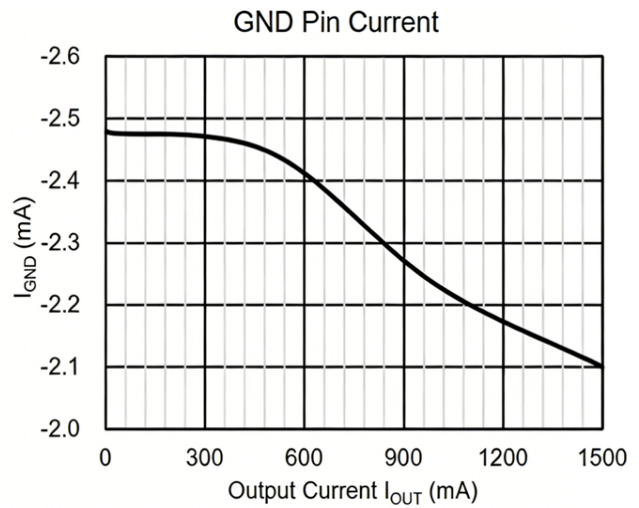
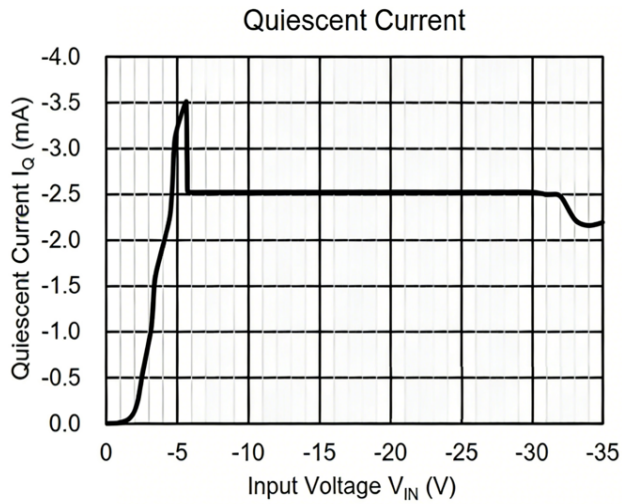
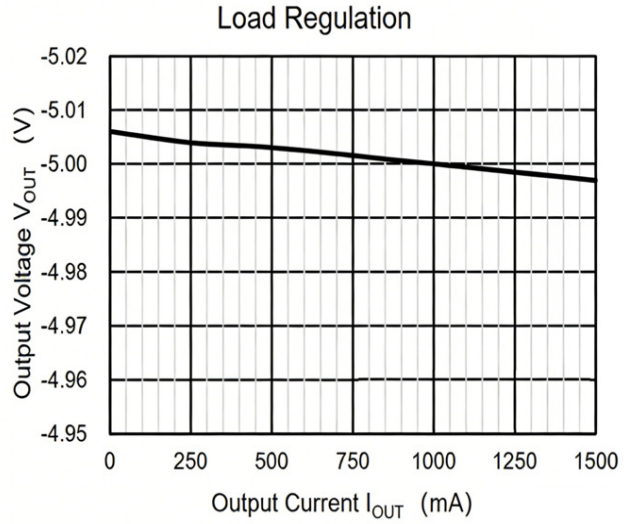
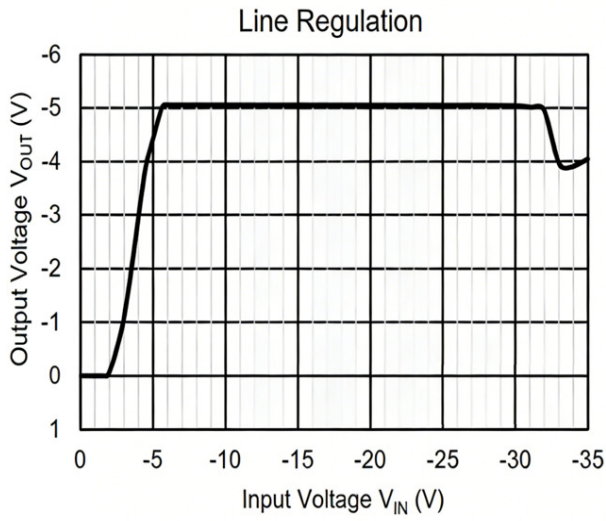
极限参数 / Absolute Maximum Ratings(Ta=25°C)

参数 Parameter	符号 Symbol	数值 Rating	单位 Unit
Input Voltage	V_i	-35	V
Junction-to-Ambient	$R_{\theta JA}$	65	°C/W
Junction-to-Case	$R_{\theta JC}$	5	°C/W
Operating Temperature Temperature Range	T_{OPR}	-40~125	°C
Storage temperature range	T_{stg}	-55~+150	°C

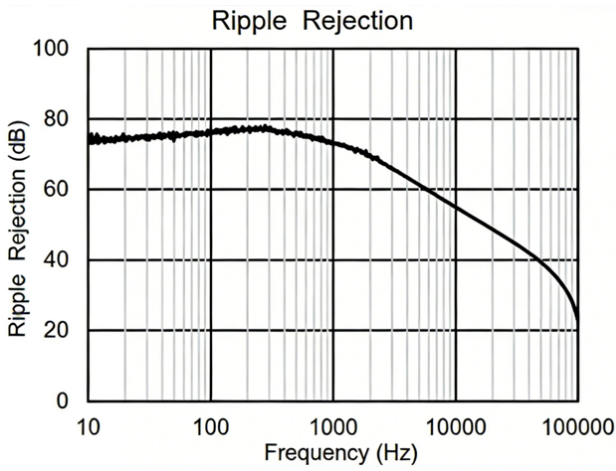
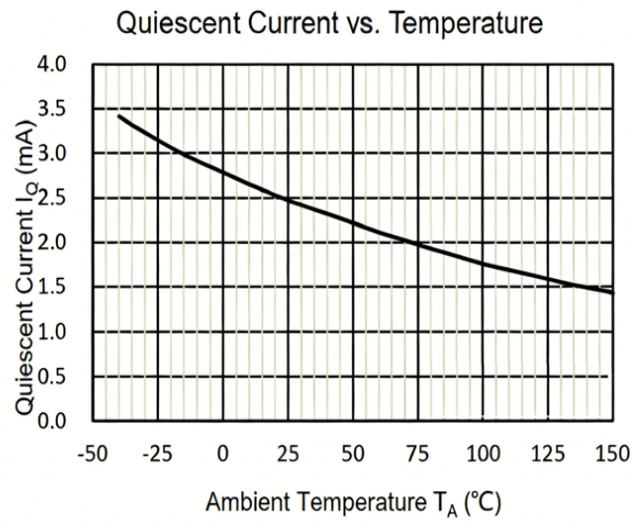
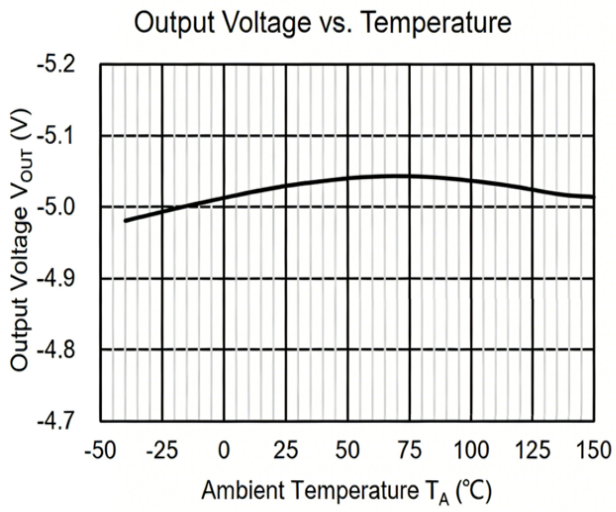
电性能参数 / Electrical Characteristics
(Ta=25°C,Io=500mA,Vi=-10V,Ci=2.2μF, Co=1μF unless otherwise specified)

参数 Parameter	符号 Symbol	测试条件 Test Conditions	最小值 Min	典型值 Typ	最大值 Max	单位 Unit
Output Voltage	V_o	$T_j=25^\circ\text{C}$	-4.8	-5.0	-5.2	V
		$V_i=-7$ to -20V , $I_o=5\text{mA}$ to 1A , $P_o<15\text{W}$	-4.75	-5.0	-5.25	
Line Regulation	ΔV_o	$T_j=25^\circ\text{C}$ $V_i=-7$ to -25V ,		35	100	mV
		$T_j=25^\circ\text{C}$ $V_i=-8$ to -12V ,		8	50	
Load Regulation	ΔV_o	$T_j=25^\circ\text{C}$ $I_o=5\text{mA}$ to 1.5A		10	100	mV
		$T_j=25^\circ\text{C}$ $I_o=250\text{mA}$ to 750mA		3	50	
Quiescent current	I_Q	$T_j=25^\circ\text{C}$		3	6.0	mA
Quiescent current change	ΔI_Q	$I_o=5\text{mA}$ to 1A		0.05	0.5	mA
		$V_i=-8$ to -25V		0.1	0.8	mA
Temperature coefficient of V_o	$\Delta V_o/\Delta T$	$I_o=5\text{mA}$		0.5		mV/°C
Output noise voltage	V_N	$f=10\text{Hz}$ to 100KHz $T_j=25^\circ\text{C}$		40		μV
Ripple Rejection	SVR	$\Delta V_i=10\text{V}$ $f=120\text{Hz}$	54	60		dB
Dropout voltage	V_d	$I_o=1\text{A}$ $T_j=25^\circ\text{C}$		1.5		V
Short Circuit Current Limit	I_{sc}	$V_i=-25\text{V}$ $T_j=25^\circ\text{C}$		10		mA

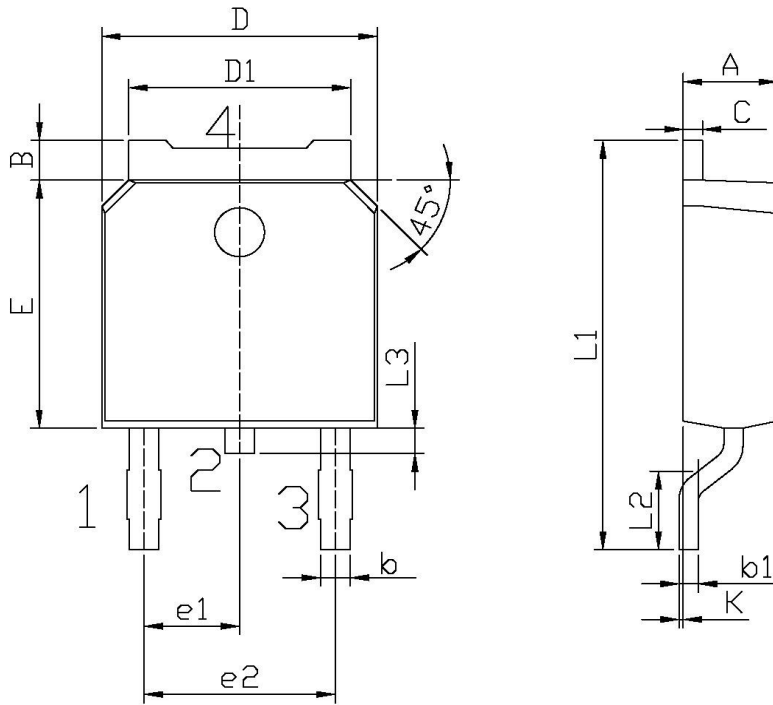
电参数曲线图 / Electrical Characteristic Curve



电参数曲线图 / Electrical Characteristic Curve



外形尺寸图 / Package Dimensions

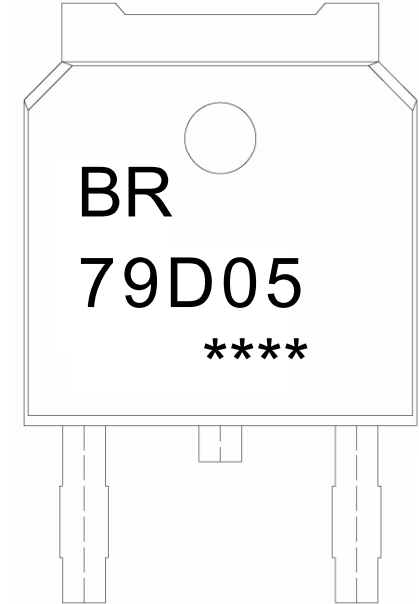


单位: mm

Symbol	Dimensions In Millimeters		Symbol	Dimensions In Millimeters	
	Min	Max		Min	Max
A	2.20	2.40	E	5.95	6.25
B	0.95	1.25	e1	2.24	2.34
b	0.70	0.90	e2	4.43	4.73
b1	0.45	0.55	L1	9.85	10.35
C	0.45	0.55	L2	1.70	2.00
D	6.45	6.75	L3	0.60	0.90
D1	5.10	5.50	K	0.00	0.10

TO-252

印章说明 / Marking Instructions



说明：

BR： 为公司代码

79D05： 为产品型号

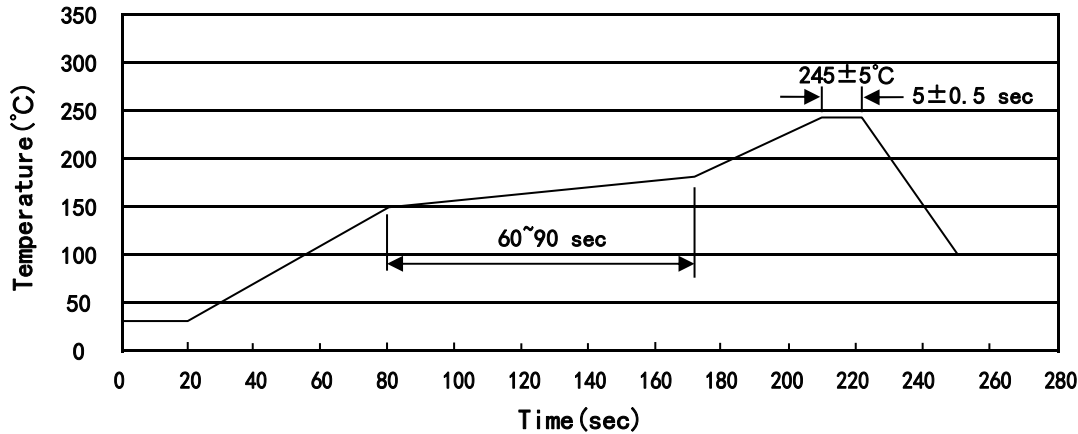
****： 为生产批号代码，随生产批号变化

Note:

BR: Company Code

79D05: Product Type

****: Lot No. Code, code change with Lot No

回流焊温度曲线图(无铅) / Temperature Profile for IR Reflow Soldering(Pb-Free)


说明：

- 1、预热温度 150~180°C，时间 60~90sec;
- 2、峰值温度 245±5°C，时间持续为 5±0.5sec;
- 3、焊接制程冷却速度为 2~10°C/sec.

Note:

- 1.Preheating:150~180°C, Time:60~90sec.
- 2.Peak Temp.:245±5°C, Duration:5±0.5sec.
3. Cooling Speed: 2~10°C/sec.

耐焊接热试验条件 / Resistance to Soldering Heat Test Conditions

温度：260±5°C

时间：10±1 sec.

Temp.:260±5°C

Time:10±1 sec

包装规格 / Packaging SPEC.

卷盘包装 / REEL

Package Type 封装形式	Units 包装数量					Dimension 包装尺寸 (unit: mm ³)		
	Units/Reel 只/卷盘	Reels/Inner Box 卷盘/盒	Units/Inner Box 只/盒	Inner Boxes/Outer Box 盒/箱	Units/Outer Box 只/箱	Reel	Inner Box 盒	Outer Box 箱
TO-252	2,500	2	5,000	6	30,000	13" ×16	360×360×50	380×335×366

套管包装 / TUBE

Package Type 封装形式	Units 包装数量					Dimension 包装尺寸 (unit: mm ³)		
	Units/Tube 只/套管	Tubes/Inner Box 套管/盒	Units/Inner Box 只/盒	Inner Boxes/Outer Box 盒/箱	Units/Outer Box 只/箱	Tube 套管	Inner Box 盒	Outer Box 箱
TO-251/252	75	48	3,600	5	18,000	526×20.5×5.25	555×164×50	575×290×180

使用说明 / Notices

本文档中提供的所有信息均受法律免责声明的约束。

All information provided in this document is subject to legal disclaimers.